

Twickenham & Richmond TRIBUNE

Contents

- TwickerTape
- TwickerSeal
- History Through Postcards
- Arts and Entertainment
- River Crane Sanctuary
- Christmas In Church Street
- Twickers Foodie
- Theatre Reviews
- Berlin Wall
- Traveller's Tales
- Football Focus
- Rugby updates

Contributors

- TwickerSeal
- Alan Winter
- Emma Grey
- Sammi Macqueen
- Shona Lyons
- Shooting Star Trust
- Alison Jee
- St Mary's University
- Richmond College
- MarkAspen
- Stuart McRae
- Doug Goodman
- RFU
- National Audit Office
- LBRuT

Editors

- Berkley Driscoll
- Teresa Read



T&RT



The Ivy, Richmond
Photo by Berkley Driscoll

TickerTape - News in Brief

York Street Road Closure This Weekend

York Street, Twickenham will be subject to a directional road closure on **Saturday 9th & Sunday 10th November**. This will only affect eastbound traffic. Vehicles heading towards Richmond from King Street will be diverted along London Road, the A316 and St Margarets Road. Buses will also be diverted. Westbound traffic into Twickenham will not be affected.

South Western Railway Strikes

Rail union RMT has confirmed that a total of 27 days of strike action will take place in December on South Western Railway. The strikes will take place from December 2nd to 11th, December 13th to 24th, and December 27th to January 1st.

Mayor's and Council Leader's Christmas card

The Mayor of Richmond, Cllr Nancy Baldwin and Leader of the Council, Cllr Gareth Roberts are looking for two budding young artists to be their little helpers this festive season by designing their annual Christmas cards.

The Christmas cards will be sent to many organisations, businesses and charities that the Council and Mayor has worked with throughout the year.

The winning entry will have their design featured on the cards, as well being invited to have tea with the Mayor and Leader in the Mayor's Parlour.

Art submissions can be by children aged 5 to 11 years, who live or go to school in the borough. Entries must be an original image in A5 format (just fold an A4 sheet in half), and should be created using colours, with no glitter or stuck on materials.

Designs should be submitted to: Mayor's Christmas Card Competition, Mayor's Office, York House, Richmond Road, Twickenham, TW1 3AA. Or email to mayors.office@richmond.gov.uk by 5pm Monday 18 November 2019

Entries must include, on the reverse of the design, the: Entrants name, Age, Phone number, Address and School

skyelectrical

Replacing your halogen recessed lights with LEDs will:

- ✓ SAVE ENERGY
- ✓ SAVE YOU MONEY
- ✓ PROVIDE BETTER LIGHTING

So...

- ✓ CALL US TODAY FOR A FREE HOME ASSESSMENT AND QUOTE

For a timed appointment please call Sky Electrical on 020 8894 1799

22 Fifth Cross Road, Twickenham, Middlesex, TW2 5LF

www.skyelectrical.co.uk



020 8894 1799
info@skyelectrical.co.uk



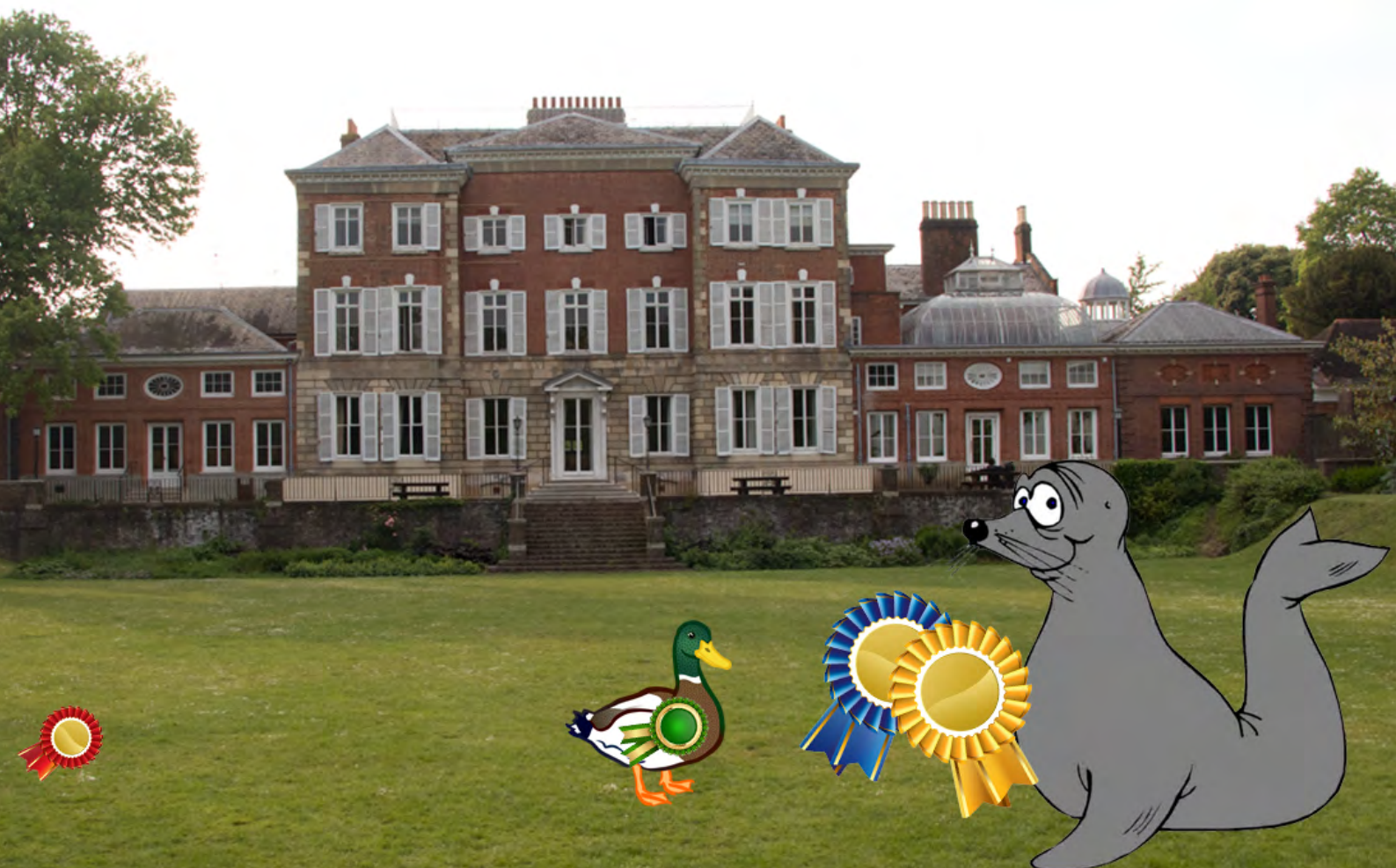
It's almost here, that moment when we wake up early eager to find out what we've got. No, not Christmas silly ... the election!

You can't avoid it, its on the TV, radio, newspapers and sometimes even on the side of a bus.

A sign it's hotting up is the increased TwitterChatter between the borough's councillors, activists and various anonymous Twitter accounts; the often shabby chatter has become even more tawdry of late.

TwickerSeal hasn't decided how to vote yet; our borough is traditionally a two-horse race between the Conservatives and the Liberal Democrats. TwickerDuck is very disappointed as the Green Party have stepped down, as part of the so called 'remain alliance' pact. He doesn't agree with the other parties' policies, so is left with a conundrum on what to do.

This election is rather poignant as it sees the retirement of Sir Vince Cable; who has long been MP for Twickenham. TwickerSeal is sad to see him go and wishes him well. Perhaps there is a new novel on the horizon?



PART 152 RICHMOND ROYAL HORSE SHOW

We have plenty of top class and amateur sporting activity within and close to the borough. One of the most important events in the United Kingdom each year was the Richmond Royal Horse show which took place in Old Deer Park for 75 years. Sadly the event is no longer with us having been first started by local vet WJ Hatton in 1892. It grew into a major annual equestrian event with Royal patronage and then unexpectedly closed in 1967.

Our first postcard this week shows a 1911 view of the lawns and grandstand. It is followed by a show programme from 1913. Our last postcard is a wonderful example of London Transport underground advertising from the 1920's. This particular card is a reprint produced by the National Transport Museum in Covent Garden in recent years.



"THE LAWN AND GRAND STANDS," Photo—Lovell Smit
RICHMOND ROYAL HORSE SHOW, 1911.

The show often put on special events including International jumping, the visit of the Spanish Riding School with its Lippizaners in 1953 and a Supreme Riding Horse competition. It was also instrumental in the success of some of Britain's greatest riders including former Richmond resident Pat Smythe. She won the Bronze medal in the Team Jumping event at the 1956 Olympic games in Stockholm.

Following its 1967 closure, Richmond Royal Horse show became part of the South of England Show. The show was revived in Richmond for a while in the late 1990's by Richmond resi-

Following its 1967 closure, Richmond Royal Horse show became part of the South of England Show. The show was revived in Richmond for a while in the late 1990's by Richmond resi-

Following its 1967 closure, Richmond Royal Horse show became part of the South of England Show. The show was revived in Richmond for a while in the late 1990's by Richmond resi-





dents but never regained its previous status.

If you fancy a different hour or two, I'll be giving a talk to The York House Society on 'Central Twickenham in 100 years of postcards' in the Salon at York House next Friday evening 15th November. Doors open from 7.00 and the talk will start at 7.30. There will be some great images of

Twickenham as it was during the last 120 years or so.

Everyone is welcome! Non-members of the society are charged £3 admission which also includes tea, coffee and biscuits. Old postcards and photos of Richmond Borough (Hamptons, Teddington, Whitton and the Surrey side of the river) will be on sale as well. Prices from £1.00. Where else can you get a great night out for £3.00!

My search for old postcards continues. I am always looking for old postcards and old photograph albums etc. The postcards can be British or Foreign, black and white or coloured and of places or subjects. If you have any that are sitting unwanted in a drawer, in a box in the loft or in the garage or under a bed, please contact me on 07875 578398 or alanwinter192@hotmail.com I would like to see them and I pay cash!

David McGeachie Property

Proud to support the Twickenham Tribune

'TENANT FINDER' LETTINGS

Lettings are still busy even now in November – there is always a rental market; in fact January is one of our busiest months. p.s. Received a great testimonial this week: "I have completed several lettings with David over the years, every one without a hitch and top quality Tenants. Can't imagine a better and more professional service. Would not hesitate to recommend." Jeff Messem. Thanks Jeff!
tenant-finder.co.uk



DAVID McGEACHIE SALES

The old clichés about sales being mostly active in spring and autumn have gone out of the window in recent years. Proof of that is how now, in November, we have more activity than for many weeks! I do think that if we get some 'B' word' certainty in 2020 it could be a very good year for vendors so maybe some buyers are getting in early. Contact me to discuss, any time.

d-mcg.co.uk

Thanks for reading and see you next week



Theatre

Sunday 17 November to Saturday 23 November at Hampton Hill Theatre. Pornography by Simon Stephens. 2005, London in crisis. Stories of euphoria, fantasy and despair. Teddington Theatre Club.

Saturday 7 and 14 December at Hampton Hill Theatre, King Arthur in Space. An old fashioned, futuristic pantomime for children of all ages. Teddington Theatre Club.

Music

Saturday 23 November, 9:00 pm, Midnight River Blues Band, Prince Blucher, Twickenham Green. Also 14 September, 9 pm, Three Kings, Twickenham.

Jazz, rock, and blues music enthusiasts who head to the bars at The Cabbage Patch Pub in London Road are advised to visit Twickfolk, Twickenham Jazz Club and Eel Pie Club websites to check what's on.

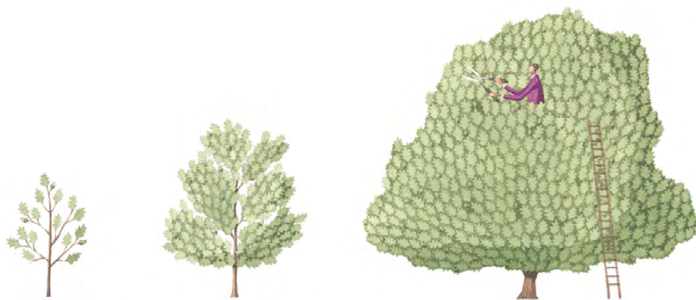
Talks

Friday 15th November

"A stroll around Central Twickenham on 100 years of postcards" by Alan Winter. Venue - The Salon in York House. Doors open at 7.00. Talk commences at 7.30. Non-Members are welcome. £3 admission includes tea, coffee and biscuits etc.

10 Minute Lunchtime Talks at Turner's House, Sandycombe Lodge, Twickenham, Starting at 12.45. Turner the Fisherman – 7th November, Turner's Women – 5th December. Book in advance.

If you are interested in advertising an Arts & Entertainment event write to advertise@twickenhamtribune.com for further information.



The Tree Agency

The Tree Agency

darryl parkin

The Treehouse
25 King Edwards Grove
Teddington, Middlesex TW11 9LY
Telephone 020 8274 0107
Mobile 07960 123580
Fax 020 8274 0119
info@thetreeagency.co.uk
www.thetreeagency.co.uk



Council consults on draft planning guidance to protect air we breathe

Residents are being asked what they think about new planning guidance which will tighten how we implement existing air quality policy and help ensure consistency for developers before submitting a planning application.

In 2000, Richmond upon Thames was formally designated as an air quality management area due to poor air quality. Richmond Council's draft Air Quality Supplementary Planning Document (SPD) is designed to give developers clear information on how their applications will be judged in terms of air quality.

The draft Air Quality SPD includes information on construction, development design, traffic reduction, electric vehicles, heating, cooling and power supplies, commercial premises and how to conduct an air quality assessment.



The impact on air quality will be considered as part of any Planning Application submission.

For more information go to:

<https://laqm.defra.gov.uk/policy-interactions/development-control/spds.html>

The [consultation on the draft SPD](#) is for six weeks from **Friday 1 November to Friday 13 December 2019**.

An advertisement for Shanawaz Express. It features a collage of fresh ingredients including a glass of yellow juice, a brass mortar and pestle, a bowl of black peppercorns, red chili peppers, and various nuts. The text includes the restaurant's name, address, phone number, website, and an allergy warning.

Twickenham Green
TW2 5AH

**Shanawaz
Express**

CONTEMPORARY INDIAN TAKEAWAY

Health Conscious?
Why not have your dishes cooked with olive oil for an extra 60p

020 88934881
www.shanawazexpress.co.uk

ALLERGY ADVICE
Please note that some of our dishes contain dairy, nuts, eggs and other allergens. If you suffer from any food allergies, please make sure to inform us before placing your order.

Councils tell Government to review Heathrow expansion

Local authorities - Richmond upon Thames, Hillingdon, Wandsworth, Hammersmith & Fulham and Windsor and Maidenhead - opposed to Heathrow expansion say that changes in Government policy on climate change mean the case for a third runway should be reviewed urgently.

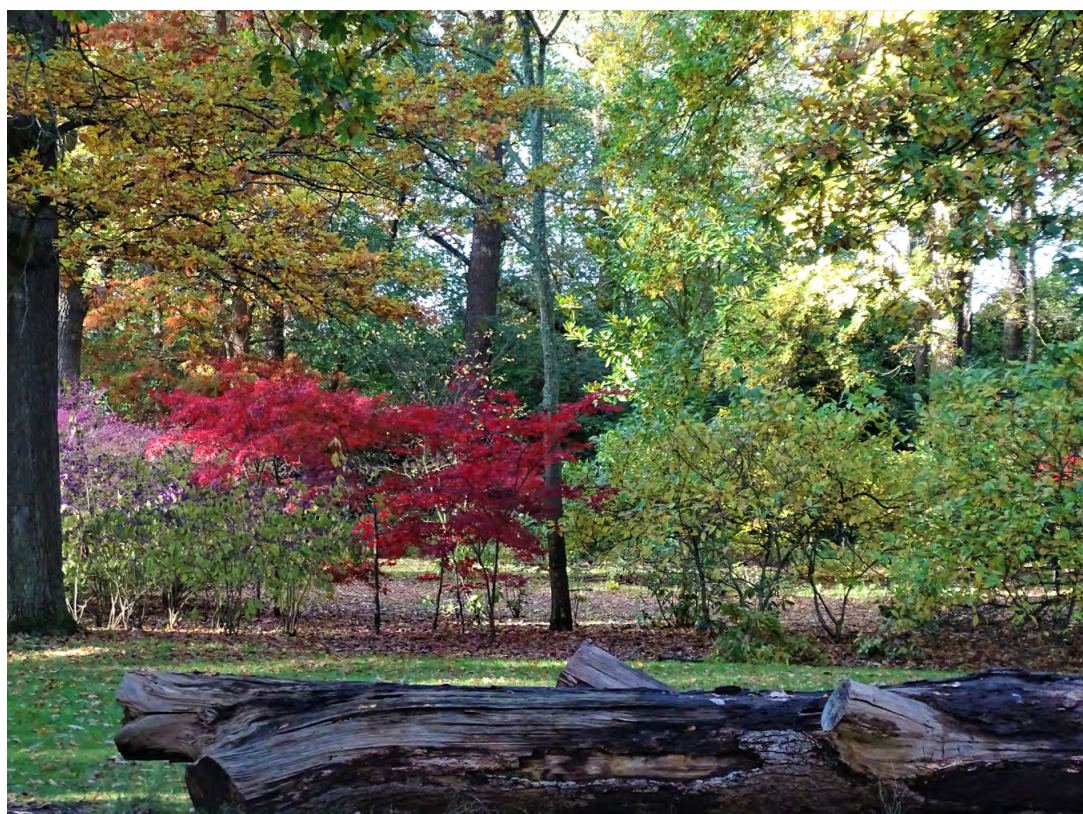
The National Policy Statement (ANPS) which included support for expansion at the airport was designated in June 2018 - at a time when the UK was committed to an 80 per cent reduction in emissions (by 2050).

In June this year following the advice of the Climate Change Committee (CCC) the Government amended the commitment to 100 per cent – the strengthening was based on *'significant developments in climate change knowledge'*.

In September this year the CCC told the Government that the planning assumption for aviation should be to achieve net zero emissions by 2050. It added that measures should be put in place that *'limit growth in demand to at most 25 per cent above current levels by 2050.'*

The CCC concluded that *'current planned additional airport capacity in London, including the third runway at Heathrow, is likely to leave at most very limited room for growth at non-London airports.'*

The councils have now formally written to the Secretary of State under Section 6 of the Planning Act 2008 calling for the 2018 ANPS to be reviewed in the light of the significant changes.



Doug's Autumn

Doug Goodman has been out and about in Bushy Park taking photos of the wonderful Autumn colours.

We will publish some of his photos next week, but here's one to give you a taste of what's to come

Architect of 20mph in the Borough Is Thinking of Moving On

Teresa Read

Alexander Ehmann, councillor for St Margarets and North Twickenham (Liberal Democrat Party) and Deputy Leader and Chair of the Transport and Air Quality Services Committee, has decided to try his luck in the General Election standing as MP for East Surrey, currently a Conservative stronghold.

Perhaps Cllr Ehmann thinks he has done his job but there have been complaints for years about the problems and traffic congestion in central Twickenham; Cllr Ehmann said early on in his term of office that his concentration was on the rollout of 20mph.

However, Cllr Ehmann is now asking for our views on “Active Travel”, i.e. Walking and Cycling.

At this point I would draw attention to the letter from a Tribune reader published last week:

“Is it just me or is anyone else bothered by the amount of cyclists using the pavement, drivers going through red lights and youths smoking drugs after dark in our public spaces?”

Yes, there is much to do in Twickenham.

Only this morning I saw two ladies on motorised scooters, side by side, scooting along the pavement on Hampton Road. These scooters are not legal in this country although they are often seen abroad. And, not long ago I barely escaped being injured by a cyclist speeding on this very pavement.

The use of lights by cyclists is another issue. It seems to be de rigueur in LBRUT for many cyclists not to use lights in the dark although it is a legal requirement specified in the Highway Code. LBRUT have yet to issue statements or acknowledge this anti-social and dangerous problem - another issue aired in a letter in the Tribune.

So, to return to the Council’s latest missive this week about “Active Travel” ...

Alexander Ehmann, who is turning his attentions to becoming the MP for East Surrey says:

“Whilst we are proud of our record, it’s clear many people choose not to walk or cycle because some streets can feel unwelcoming and are too dominated by traffic and polluted by poor air quality.

“We need to make sure our streets are designed to make people feel as safe and as confident as possible when walking and cycling. We have recently declared a climate emergency and at the heart of our proposed Air Quality strategy is a commitment to cutting transport-related carbon emissions to help Richmond upon Thames become carbon neutral. Therefore, we need to make walking and cycling safer, easier and more pleasant; improve air quality, with reduced traffic and a further cut in car use; and to take bold action to make our streets and neighbourhoods enjoyable and welcoming places to be. We welcome comments, suggestions and ideas about our draft Active Travel Strategy and we look forward to hearing views from our residents and local organisations.”

To have your say please visit <https://haveyoursay.citizenspace.com/richmondcs/ats>

Finally, perhaps LBRUT could do something about the broken pavements in the Borough – some of us have fallen foul of the current uneven situation and quite frankly “Active Travel” might not seem so welcoming to those who have suffered injuries whilst walking to and from a bus stop.

And, don’t forget the recent letter in the Tribune about the perils of travelling via the unfinished Twickenham Station ... and the threatened train strikes. Yes, there is much to do.

Lest we forget

Isobel Grant

Conservative Parliamentary Candidate for Twickenham

This weekend, I'll be joining the thousands of local people gathering around war memorials across our borough, to honour those who made the ultimate sacrifice during all too many wars – and, particularly, those who died defending our own country.



My teachers at St Catherine's in Twickenham taught me a love of poetry. I clearly recall reading the War Poets, and how they so poignantly brought home the horrors and utter futility of warfare. I tell my own children about examples of war service within our own family, in an effort to personalise war and its impacts on everyday people like us. My grandfather served in the Navy in both world wars, and I want to honour his contribution by trying to make our world a peaceful one. I play my small part in this, by teaching my children that it's up to each and every one of us to ensure such awful events never happen again.

We should also spare a moment to recall how our own area played its part in restoring peace. As many will already know, the WW2 D-Day landings were planned by Eisenhower from his temporary headquarters in Bushy Park.

The Tribune welcomes articles from all candidates

RISE to the challenge and have your say on future sports programme

Residents are invited to have their say on the Council's programme of inclusive sport and exercise, aimed at making fitness activities accessible to all.

RISE (Richmond upon Thames Inclusive Sport and Exercise) was launched in 2008. The programme aims to highlight the wide range of inclusive and disability-specific sports available in the borough.

The programme is for young people and adults and currently includes activities such as: Football, Junior dance, Multisport (including basketball, cricket, hockey and tennis), Swimming Trampolining and Wheel chair basketball.

In order to help shape the future programme, the Council is keen to find out more about what young people and adults want. This includes those who regularly take part in sporting activity, and importantly those who do not.

Feedback will help inform RISE from 2020 onwards.

Have your say on: [Adults Survey](#) - [Young People Survey](#) - [Parent/Carer Survey](#)

The deadline for feedback is **Monday 9 December 2019**



The Robin is always a welcome visitor with his cheery song and seems to herald Christmas as cards appear everywhere with his image. We have been asked about the Keats quotation from last week and it is from his poem ***Ode to a Nightingale***. These beautiful, melodic birds are not heard in many of the places where they were habiting. It is sad to see grown men crying when they go to old haunts with their children and there is no bird song only memories from their youth to pass on. This loss of wildlife was highlighted in

Autumnwatch when Chris Packham was talking to a young naturalist who calmly stated that he had never seen a hedgehog.



What do you see above? Beauty, trees, sky, wild hedgerow and the last bloom of autumn? Or do you see also the home and feeding spaces these offer to a multitude of wildlife in addition to their own intrinsic value? Habitat is more than just neat and manicured 'objects' for us to manage; it is a living thing and it is greater than what the eye can see. Outward appearance seems to be so valued and yet what is within can often be the real prize with human beings and with nature. The impact of human needs on the remaining green spaces has to be taken more seriously if we want to sustain what is left let alone reverse the losses from past mistakes.



Everyone Sang
"Everyone's voice was suddenly lifted;
And beauty came like the setting sun:
My heart was shaken with tears;
and horror drifted away...O, but Everyone Was a
bird; and the song was wordless,
the singing will never be done."
Siegfried Sassoon

Poppies in our wildflower meadow for Remembrance Sunday – Lest we Forget the horrors of war and the debt we owe to those standing up for Peace for All.

The River Crane Sanctuary website <http://e-voice.org.uk/rcs/>

Over 700,000 free trees for communities and schools

Nearly three quarter of a million trees are winging their way across the UK as part of the Woodland Trust's Big Climate Fightback.

Almost 4,000 schools and community groups will be taking delivery of the free saplings over the next two weeks, and while each group has its own reasons for planting, every tree will count towards the Trust's campaign to help tackle climate change.

The Big Climate Fightback aims to get more than a million people to [pledge to plant a tree](#) on the run up to a mass day of planting across the UK on November 30. Everyone that applied for a tree pack will be added to the list of pledges.

John Tucker, Director of Woodland Outreach, at the Woodland Trust said:

“Tree planting has never been higher on the social and political agenda. From school children to MPs, people are waking up to the message that trees are a big part of the solution to tackling climate change. Trees absorb carbon dioxide and produce oxygen, as well as filtering out other harmful pollutants from the air that we all breathe. Quite simply we need more of them.

“The government has committed to act on the Committee on Climate Change recommendations and legislate for net zero emissions by 2050. To do this we need to plant 50 million trees each year. The Woodland Trust is pleased to be sending out this huge number of trees to schools and community groups that are eager to get planting and be part of the Big Climate Fightback.

“There are many reasons why schools and community groups choose to plant trees. Some of the wonderful projects this season include creating outdoor classrooms where pupils can spend time in a tranquil, outdoor, environment which will improve their education as well as their mental health and wellbeing. Others are growing natural screens and borders from roads to help to reduce pollution and improve air quality. We're delighted to be helping them to create greener places to live.”

The trees will be sent far and wide:

- England: 583,875 trees to 3,310 organisations
- Scotland: 69,855 trees to 339 organisations
- Wales: 44,145 trees to 212 organisations
- Northern Ireland: 20,190 trees to 87 organisations

UK Total: 718,065 trees to 3,948 organisations.

The packs are generously funded by lead partners Sainsbury's, players of People's Postcode Lottery, Yorkshire Tea



*Fallen Oak, Richmond Park
Photo Peter Dench WTML*

and Selfridges. In addition, the Department for Environment, Food and Rural Affairs (Defra) has supported the Trust to provide 100,000 trees a year to state funded primary schools in England over four years. DEFRA also funds four regional project officers to support schools to assist them with tree pack applications helping to increase the spread of green space improvement.

Since the initiative started in 2010, 9.6 million trees have been sent to schools and community groups keen to improve their local area. Please find a case study about Grange Farm Centre, Chigwell, Essex, in the notes to editors.

Grown in the UK

Every tree has been UK sourced and grown as part of the Trust's quality assurance scheme to guarantee the provenance of native trees. The scheme guarantees that trees from a number of nurseries marked with the UKSG badge are raised from seeds sourced only from the UK and grown in the UK for their entire lifespan.

The aim of the scheme is to reduce the risk of importing pests and diseases with planting stock grown outside the UK.

All our saplings arrive with protection to give them the best chance of survival, and each pack comes with full instructions on planting and after care. We also direct all applicants to our Defra funded resource [Tree Tools for Schools](#) which has everything they need to plan, plant and care for their tree pack.

If you would like to apply for free trees in the coming season get your application in soon, as the scheme is once again proving to be extremely popular.

The Trust has two deliveries each year - one in March and the other in November - to coincide with tree planting season over the winter months. Applications for the next delivery in March 2020 are now being accepted, via the online application form, which can be found [here](#), along with details about the different packs on offer.

Tree packs are allocated on a first-come-first-served basis and once they're gone, they're gone. You can apply for between 15-420 trees depending on the space you have available and your requirements. Packs are: hedge, copse, wild harvest, year round colour, working wood, wild-wood, wildlife, and urban.

Apply for your trees at www.woodlandtrust.org.uk/freetrees

To join the Big Climate Fightback and to pledge to plant a tree visit: www.woodlandtrust.org.uk/bigclimatefightback

Case study, Grange Farm Centre, Chigwell, Essex
You can view the case study [HERE](#)



WOODLAND
TRUST

The Missing Link

By Teresa Read

In last week's Edition of the Twickenham & Richmond Tribune, Edition 156 - in fact, the anniversary of our third year online - I wrote about DNA studies in the article "Who Do You Think You Are". (I was lucky to have the privilege of working with the DNA researchers in Florida and put a small project online "African Origins".)

We have seen that it is widely thought that our ancestors came from Africa, the "Out of Africa" Theory and last week the news was about DNA studies which had traced "Eve" to Botswana.

Nowadays, although we have the advantages of DNA research, archaeological evidence is still important.

This week the possible discovery of the "Missing Link" was in the news - but the discovery was in Germany, not Africa. Does this point to the "Multi-Regional Theory" of our evolution?

No doubt scientists will eventually come up with more and more information but in the meantime, it is interesting to speculate and consider all the possibilities.

A link to discoveries in Germany can be found here

<http://worldinfozone.com/features.php?section=AfricanOriginsResources&page=2>

Further reading:

<http://worldinfozone.com/features.php?section=AfricanOrigins>

Gibraltar Alive: A scenic view of the Rock

92 pages of full colour photos of Gibraltar. See the Rock as you've never seen it before! Only £10

Available to collect from Crusader Travel
or contact@TwickenhamAlive.com



Emotional tribute to railway hero – SWR worker pays respect to his great-grandfather, 100 years after first memorial service

Matthew Phillips, South Western Railway team member based at Putney station, has a special connection to the railway. His great-grandfather worked on the very same route (then called the London and South Western Railway) over a century ago as a parcel porter in Southampton. Tragically, after signing up to fight on the Western front during World War One, Arthur Wilkins was killed in action at the age of just 21, on 15 April 1918.

His great-grandson Matthew was invited to represent SWR at the Centenary Memorial Service, at Southwark Cathedral on Wednesday, commemorating those who lost their lives during both world wars. He will also lay a wreath at the Victory Arch memorial on Armistice Day, along with SWR's Managing Director, in honour of fallen railwaymen.

Arthur is commemorated (as AJJ Wilkins) on the Great War memorial by the Victory Gate stairs, at Waterloo station. He worked for LSWR as a parcel porter at Southampton Central and in 1916 at the age of 19 volunteered to join the Hampshire Regiment. Having been injured at Paaschendaale, he returned home to convalesce before re-joining the war again in France with the 1st Battalion, Somerset Light Infantry (fighting alongside the author C.S. Lewis).

Arthur's regiment played an important part of a wider effort in repelling the final great assault by the German army across France and Belgium at La Basse Canal.

Arthur was killed on 15 April 1918 at the age of 21, leaving his wife and daughter (Matthew's grandmother).

Andy Mellors, Managing Director for South Western Railway, said

"It was a honour to attend the event at Southwark Cathedral, 100 years after the first service of commemoration. It will be a very special moment to lay a wreath at the Victory Arch on Armistice Day, with Arthur's great-grandson Matthew."

Matthew Phillips said of his great-grandfather:

"It was an honour to be able to remember my great-grandfather, a proud railwayman for our company and his colleagues who gave up their today for our tomorrow. My family have always been incredibly proud of him. Despite not wanting to go, he signed up and embarked for the war twice - the second time knowing the horrors of the war."

"Thanks to the information passed on by my grandmother and the research my father and I have done for many years, we visited his plaque in Ploegsteert, Belgium 18 months ago. He is a hero to our family."

Arthur was one of over 186,475 railway workers from the UK and Ireland who volunteered and served in World War One. It is claimed that 18,957 of them lost their lives.



Arthur JJ Wilkins (second from left)

Christmas in Church Street

By Shona Lyons

The month of December sees the end to the year's events that Church Street has kindly hosted and which I have organised. We have our Craft fair on the 8th which has come a long way from its humble beginnings of just a loose collection of 10 or so stalls to now over 45 stalls of all kinds of mostly local arts and crafts and street food and even a really nice horse box selling Twickenham distilled gin! Double that number have been relinquished to the waiting list and we are still getting quite a few calls every day.. But the thought of more than 45 stalls fills me with dread, with visions of cars bumper to bumper in this little street and irate stall holders committing road rage crimes as they try and unload their goods on the day.



We will have entertainment too with our much loved musical staples, the Richmond Music Trust whose young players we plie with pancakes from the creperie stall and hot chocolate from Corto as part payment for their services and also the Elastic Band from St Margaret's has expressed interest so that should make a nice harmonious addition to the proceedings. Of course John Chippy Wood will be here with his fun and traditional Punch and Judy stand at the top of the street, and there will also be children's crafts, a petting zoo (new for this year) and face painting.

Then we have the French Market from Brittany coming at the end of their English tour. Let's hope Mr Creachy will still have some shallots, onions and garlic left! This is on at the weekend Saturday & Sunday 21 & 22 December 9am-5pm Saturday and 10am -4pm Sunday. It will be a great place to pick up last minute presents, with French soap, honey, table clothes, basket ware, scarves, hats, jumpers, delicatessen, tartiflette, charcuterie, cheeses, crepes, sausages

and more (you name it it's here!) It will be a great chance to soak up the wonderful Christmas atmosphere in Church Street in these final few days before Christmas. The wonderful small and fiercely independent Church Street traders will all be open and putting on their best show to tempt you with their wares. You've seen the adverts (BP, Boots, and TJ Maxx have all filmed Christmas adverts in Church Street) now come and experience it for real. <https://m.youtube.com/watch?feature=youtu.be&v=UD5fl0q4fPA>



Get walking this winter

A programme of winter health walks has been launched by Richmond Council to encourage people to get out and about and enjoy the winter beauty of the borough, whilst staying fit and healthy.

Richmond Health Walks are one of a range of free healthy lifestyles services on offer for local residents as part the Richmond Lifestyles Service, commissioned by the London Borough of Richmond upon Thames. Each week already over 180 walkers take part.

Walks are short and over easy terrain and are open to everyone but are especially aimed at those who are least active.

Seven weekly walks are supported by a team of friendly, specially trained volunteers who are on hand to provide encouragement and support, and make sure no one gets left behind.

Many walkers start walking to improve their health but find it easy to keep coming back because of all the new friends they have made. As well as all the physical health benefits, Walking for Health is also great for your social life!

Cllr Piers Allen, Chair of the Adult Social Services, Health and Housing, said:

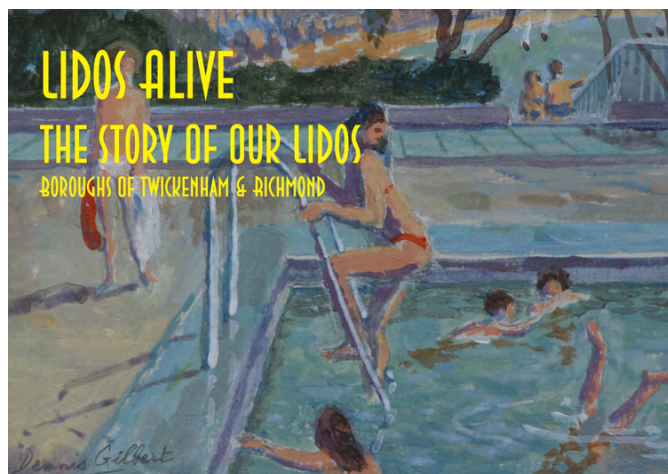
“Being physically active is proven to be good for physical and mental health. Simply going for a daily walk is good for you and having a group to go with can help to reduce issues like social isolation. We want more people to enjoy a longer life in good health. The Healthy Walks programme is a great way to stay healthy and meet people. There are walks all over the borough so you can find a local one or join in others.”

Visit [Health walks](#) to find out how you can join.



An Ideal Present for just £6

Lidos Alive – the Story of Our Lidos - is a 63-page A5 book with colour photos and illustrations full of interesting information about the history of outdoor swimming in the Borough and the rise of the lido. Contents include Mereway Bathing Place, pools in Bushy Park, Hampton Pool, Teddington Pool, Hampton Wick, Tagg’s Island, Marble Hill, Twickenham Baths, Pools on the Park and other interesting stories.



Books can be purchased at Crusader Travel in Church Street, Twickenham and Premier Wines next to Strawberry Hill Station.

Run, crawl and climb with the Twickenham Stadion Race in aid of Shooting Star Children's Hospices

On Saturday 23 November, for the first time ever, the iconic Twickenham Stadium plays host to the Twickenham Stadion Race, an amazing 5K challenge from Spartan Race UK asking participants to run, crawl and climb in aid of local children's hospice charity, Shooting Star Children's Hospices.

The charity has been announced as the official charity partner of Spartan Race UK, the leading obstacle race and endurance brand, for the first ever Twickenham Stadion Race held in the world famous rugby stadium.

The race is open to all ages and abilities and tasks super Spartans to face a 5K course complete with 20 exciting obstacles. There is even a special Spartan Kids race for children from 4 – 13 years old – with a wealth of obstacles and even some spear throwing! What's more signing up with the charity means you will save on sign up fees – meaning it's a great event for the whole family to take part in – especially as children's places are free.

Six-year-old Alex and his younger sister Maisie, who's three (soon to be four!) are taking on the Spartan Kids race in memory of their baby cousin Jack who died in May, aged just 26 days old.

Jack was born on 26 April with holes in his lungs and chronic kidney disease, spending the first 18 days of his short life in three different hospitals. On day 19 his parents, Kirsty and Michael were told the devastating news that he was being moved to a hospice for end-of-life care. Jack was transferred to Christopher's, Shooting Star Children's Hospices' Guildford hospice.

Jack's mum Kirsty from West Byfleet said, "When arriving at Christopher's hospice our family were greeted and looked after from the first second. We got to make memories with Jack that we never thought possible. We got to make memory casts of his hands and pictures that we will cherish forever. The staff looked after Jack like he was their own, sitting and cuddling him all night so we could get some sleep. The physical, mental and emotional support they gave us and our family is out of this world. Jack had a life because of the hospice and we thank them for the 7 days we got spend with our baby as a family."

When Alex and Maisie's mum Amy asked if they wanted to raise money for Shooting Star Children's Hospices by taking part in the Twickenham Stadion Race, the siblings didn't hesitate to say yes.

Amy, from Hanworth said, "They are very active, outdoorsy children and when we watched some videos of other Spartan Kids races they were really excited by them. They can't wait to see what the challenges are!" Alex and Maisie will be joined by their six-year-old friend Jessica and be cheered on by the family. "Alex says he's looking forward to running as fast as he can, and Maisie is looking forward to climbing over lots of things!"

Thinking ahead to the race Amy said, "We've been practising running and jumping over things in the garden, and practising on climbing frames and balance beams in the play park." And afterwards? "I'm sure there will be lots of cakes to refuel afterwards – and they are also looking forward to getting their Shooting Star Children's Hospices Spartan inspired temporary tattoos at the end."

Shooting Star Children's Hospices hope to raise £50,000 for the Twickenham Stadion Race so they can continue to provide a lifeline for the families they support, including practical and emotional care for the whole family. With only 10% of their income from government funding they rely on their supporters generosity to raise the difference to ensure their service keeps running and they can continue to provide support for family's like Jack's.

Amy concluded, "The time at Christopher's was the only time Alex and Maisie got to meet Jack as they weren't allowed to see him in hospital - it was a beautiful day. Shooting Star Children's Hospices continue to support our family, providing amazing aftercare for Jack's parents, Kirsty and Michael and his 3-year-old sister Isla. They provide an invaluable service in what is the worst possible situation and make this as easy and calming as possible. I can't praise them enough for what they did for Jack and our family."

To find out more and to sign up visit www.shootingstar.org.uk/event/twickenham-stadion-race/

Saturday 23 November - Twickenham Stadium, Whitton Road, Twickenham, TW2 7BA
Cost: Adult £30 (14+) | Children free (4 – 13 years-old)



CALENDAR NOTE: THE ADVENT OF CHRISTMAS

Phew, Halloween and Bonfire Night are both over, and it's downhill to Christmas from now on. I love the idea of an Advent calendar, but I fear some of them are really taking the whole Advent scene a tad too far and over commercialising it. That said, there are so many different themes and genres of Advent calendars on the market this year that one would be hard pushed not to be tempted to indulge in one - or buy one for a loved one! Prices vary enormously too - from some amazingly good value ones - for example Holland & Barrett has a surprisingly good range with some starting from just £2.49 (albeit for a small 93g Vegan chocolate one)

As expected, and always very reliable on quality, Marks & Spencer has a good range again, including, for the adults of course, a rather yummy sounding 'gin' one, with gin truffles and a mini bottle of gin to shore you up for the onslaught of Christmas Day. At just £10 I think that sounds like really good value. And they've got a Whisky Wonderland one too for the same price.



There's a cheese calendar too this year, widely available from many supermarkets, including Lidl, Asda, Waitrose, Sainsbury and Ocado - around £8-10 for 24 individually wrapped cheeses. The calendar has a book style of packaging, allowing one half to be removed after the initial 12 days, maximising fridge space.

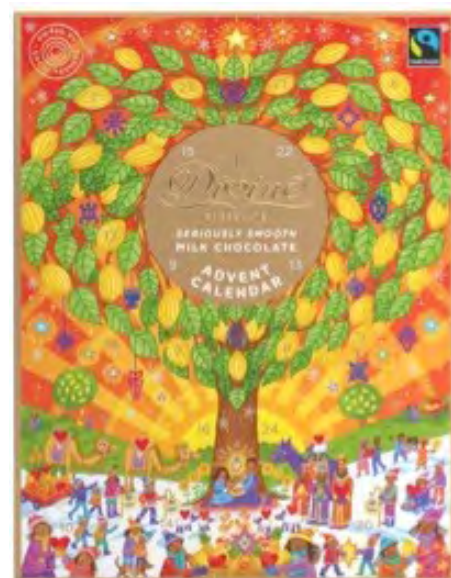


If you're feeling more adventurous and flush with the cash, you could go for the La Durée Advent calendar (£32) which is an exquisite indulgence containing delicious chocolates, caramels and other treats to sweeten the countdown to Christmas in a Parisian fashion. Available now from La Durée stores and also online.

And as the Germans seem to 'do' Christmas in such a splendid way, I would also suggest the Niederegger ones. I was lucky enough to be sent one last year and we thoroughly enjoyed it. At £25 or £35 for a 300 or 500g one respectively, you will have the most divine marzipan and pralines to discover throughout Advent.



And talking of Divine, the Divine Advent Calendar, available from Oxfam, or Waitrose, is still - in my opinion - THE one to buy for youngsters or oneself if Advent has religious significance for you. Available in milk or dark, it actually



features a nativity scene! The chocolate is FairTrade and very good indeed. And at £5 it is stonkingly good value!

St Mary's University Update

St Mary's University Launches New Sport and Faith Research Centre

The Faculty of Sport, Health and Applied Science (SHAS) at St Mary's University, Twickenham last night launched the Sport, Wellbeing, Inclusion and Faith (SWIFT) Research Centre.

Prof Symeon Dagkas, the Dean of SHAS and Co-Director of SWIFT, introduced Prof Mons Vladimir Felzmann, aka Father Vlad, to deliver the key note speech before receiving thanks from Dr Abbe Brady, Head of Department for Psychology & Pedagogical Science.

The SWIFT Research Centre aims to achieve valuable outcomes for young people by drawing on contemporary ideas and research to develop innovative thinking and action in sport, wellbeing, inclusion and faith.



Exercise improves not only concentration but also the ability to absorb information, education. Sport teaches self-discipline and that getting up is far more important than falling down. It also reduces obesity and improves social cohesion.

Underpinned by its philosophy of dreaming vast, starting small, growing fast, it has been seeking partnerships. In St Mary's, it has now found its ideal mate.

Father Vlad said "SWIFT is about Sport, Wellbeing, Inclusion and Faith and developing these values within young people. We are looking to develop the character and self-esteem required to help them move forward and to teach coaches how to instil this in the young people they work with."



Pope Benedict XVI launched the John Paul 2 Foundation 4 Sport (JP2F4S) at St Mary's University in September 2010.

JP2F4S is akin to a Trade Association as it inspires, motivates, enables and supports Sports Clubs to be conceived and grow; helping them to find funding while monitoring and mentoring their leadership to sustain the values of JP2F4S; encouraging them to communicate their achievements onto a wider stage.

Prof Symeon Dagkas said "We are very excited about the future of this research center and its contribution to the research community at St Mary's but beyond, nationally and internationally. And I am more excited about its impact in changing young people's lives as well as coaches and teachers."



Richmond upon Thames College students and staff recognised at annual Jack Petchey Award Ceremony

On Monday 4 October, eight Richmond upon Thames College (RuTC) students and one teacher were awarded a Jack Petchey Award at the annual ceremony at Richmond Theatre.

The Jack Petchey Foundation supports college and school students throughout London and Essex. It recognises outstanding young people, aged between 11 and 25, and allows students and staff to celebrate their efforts and achievements. The Jack Petchey Achievement Award was presented to our and many other amazing students by Cllr James Chard, Deputy Mayor of Richmond upon Thames, and Cllr Margaret Thompson, Mayor of Kingston upon Thames.

The winners were nominated by their peers throughout the last academic year and at the ceremony they received a certificate, a book from Sir Jack Petchey himself and a £250 grant. Students can choose how they want to spend this grant to benefit their school.



Sharna Davison, who finished her Level 3 Sport and Exercise Science course this summer, won the award for her commitment to the women's college football team, demonstrating determination, optimism and respect. Arany Yogeswaran, who progressed from Level 1 to Level 2 Professional Cookery, was recognised for her catering achievements, such as winning bronze and silver medals at Salon Culinaire in Birmingham and Wessex Salon Culinaire, as well as excellent team work and impact she has in college.

Six of RuTC's Supported Learning students received recognition, including Lini Thomas, who has excelled at showing an outstanding work ethic during her work at the college's Apple Tree Café and became a role model for other students. David Gould who progressed well during his work experience at Fulwell bus garage and is now able to perform a variety of jobs independently and enthusiastically with a smile on his face. Geri Mulvaney who always sets high standards for the class by being on time, working hard and trying new things when her disability may restrict her. Joseph McSweeney supported RuTC over busy enrolment times as a student guide and was recognised for his excellent customer service and communication skills and has now secured a Supported Internship at Hilton Hotel. Libby Benjamin flourished whilst in college and won an award for overcoming her struggle with large and noisy environments and is always looking to improve herself. Valeriya Krushovska was shy when she came to college without any of her previous friends but quickly became a popular member of the group with her smile and hard work, resulting in her award.

In addition, Sport teacher Sam Nicoll was awarded the Jack Petchey Foundation Leader Award for his commitment and dedication to inspire all students to be the best they can be through sports. Through his support, creation of a fun and comfortable environment and his enthusiasm he is a role model for his students and inspires them both on and off the pitch.



**Richmond upon
Thames College**



Sex Cells

by Anna Longaretti

OHADS at The Coward Studio, Hampton Hill Playhouse until 9th November

Set in the call centre of a sex aids business, *Sex Cells* is a gentle comedy with some real laugh out loud moments. We are treated to some excellent one liners and visual gags with the props on loan from Ann Summers. However, the play explores the hidden depths of emotion in its five characters; four women with very different issues and views and their hapless boss.



The performances are uniformly excellent. Sally Halsey's matter of fact delivery and excellent comic timing belie the poignancy of her storyline. Her depiction of Lily, top sales person is pitch perfect. Darren Mcllroy is superb as the sadly comedic Mr Causeway. It would be easy to caricature, but Mcllroy's performance and debut director Joolz Connery's sensitive direction give him real depth of character.

The remaining three characters are equally well-portrayed. And it is through these women that the complex relationships that women the world over have with sex, relationships and babies are channelled. Tiffany, played by Julie Davis is footloose and fancy free. Charlotte Pilbeam's Sylvie is desperate to have a child, and Dionne King's Janice is desperate to have some freedom from her large family. All perspectives are here in this one small office.

The constant reminder of the fact that "sex" is linked to "fun" when juxtaposed with the definitely unfunny subjects of IVF, death and a complex mother-son relationship give the play a layer of depth that is surprising and effective.

But fun this play undoubtedly is, for the best tragedies have comedy running through them. It is a shame that it comes to a rather abrupt ending

Read Eleanor Marsh's review at www.markaspen.com/2019/11/06/sex-cells

Photography by Jen Laney





The Mikado

by W.S Gilbert and Sir Arthur Sullivan

English National Opera, London Coliseum until 30th November

Any G&S fans sensitive to snobbery have a tough time, as it's fair to say that for some Gilbert and Sullivan falls into that space between 'too highbrow' and 'too popular', but most G&S fans don't waste their time fretting about snobbery, preferring to spend it enjoying the fabulous, witty entertainment provided by this enduring canon of work.



It's probably stating the blindingly obvious to say that Jonathan Miller fully understands what Gilbert and Sullivan were about, and a production of *The Mikado* created by Jonathan Miller in 1986, now revived by Elaine Tyler-Hall, can only work spectacularly. They were pointing out the flaws of The Victorian society in which they lived but doing it by creating a satire set in the faraway country of Japan where flirtation is punishable by death and a lot of very attractive characters can play out an entertaining storyline and everyone enjoys themselves.

ENO's *Mikado* is a beautiful production that provides two(ish) hours of total escapism to a lovely Art Deco land full of carefully crafted silliness. Stefanos Lazaridis' cream and white grand hotel set, and Sue Blane's monochrome costumes are visually stunning. Dancing maids and camp bellboys appear at appropriate moments, grinning winningly and dancing at a speed that brings to mind the first black and white films. Chris Hopkins' conducting keeps the pace sufficiently brisk, doing full justice to Sir Arthur Sullivan's music, but steady enough for all of W S Gilbert's lyrics to be heard.

Characters in this happy land are carefree and eccentric. Richard Suart's Ko-Ko minces about the stage happily living in the moment. The Sussexes, vegans, and the overly politically correct are on his "Little List"

Read Eleanor Lewis's review at www.markaspen.com/2019/11/03/mikado-eno

Photography by Genevieve Girling





Rewriting the Climate

by Matthew Griffiths

Arts Richmond, Richmond Literature Festival

Hampton Hill Theatre, until 2nd November

Can poets influence climate change? A thoughtful and sedate event presented by Matthew Griffiths and Polly Atkin, this thought-provoking evening was introduced gently by Matthew who explained his angle on one of the greatest issues of our time. Matthew explained how he was driven to produce his new collection, [The New Poetics of Climate Change](#) and elaborated on the innovative mix of modern poetry that is vital to comprehend such a complex subject.

A scale of eclectic poems were read, with nicely paced explanations in between, the first being *The Greenhouse Effect* by Fleur Adcock. Malisa Elliot's strong delivery drove home the lyrical works of Adcock's poems focusing on simple things such as looking out to sea. Matthew talked about the very common term, the greenhouse effect, and the many layers of its meaning. Stephen Leslie gave a potent reading of *The Burial of the Dead*, from T S Eliot's the immortal *Wasteland*, which Matthew chose because of the clamouring of voices, and several landscapes, and felt it should discuss about the way we see nature.



Matthew elaborated how poems provoke multiple images, as Stephen breathed life into the words of *Windscale* by Norman Nicholson, and the extraordinarily hard hitting *The Imaginary Iceberg* by Elizabeth Bishop.

Matthew's summary of this array of poems was articulate and full of insight, genuinely making us re-think our concepts of Climate Change. Matthew's choice became clear, full of illustration and strong images; provoking a response in all senses.

In the second half Polly and Matthew discussed motives for their work and theories, and the beginnings of their interests in climate change. But, they were asked, who were the new eco-poets?

Read Heather Moulson's review www.markaspen.com/2019/11/04/climate

Photography by BA Tipping



Things I Know To Be True

by Andrew Bovell

Putney Theatre Company, at Putney Arts Theatre until 9th November

There can be no more foreboding sight to greet a theatre audience than a set depicting a well-kept family garden. You know that you're in for two hours of intense drama and revelations. The better-kept the garden, the more intense your evening is likely to be.

And so it is with Andrew Bovell's *Things I Know to Be True*, an Australian play written in 2016, which has swiftly captured the imagination of [UK theatre companies](#). Young Rosie Price has her heart broken on her gap year, and returns to the family home for solace, only to find a family on the verge of tearing themselves apart.



As the programme notes, Hallett Cove is broadly similar to any suburb throughout the Western world. So while the setting remains Australian, with references to dollars, Sydney, and Brisbane, the play's themes are revealed to be truly universal.

"This garden was the world" as various characters tell us throughout the play, and appropriately we never really leave it. Tom Sainsbury's simple set comprises a single flowerbed filled with roses that bloom and wilt throughout the play according to the changing seasons, with a garden shed off to one side, and projections on the backcloth. Director Frances Bodiam ensures that the cast make maximum use of the spacious playing area, and more. Characters frequently enter through the aisles, and from the back of the theatre, so the audience is never quite sure where the next revelation will come from.

With a play that is so new, and so popular, it doesn't feel appropriate to talk in detail about the plot, beyond mentioning that although there are frequent clues towards the problems and preoccupations of most of the characters, this is no soap opera, and their true secrets generally surprised the audience by being just out of kilter with our expectations.

Read Andrew Lawston's review at www.markaspen.com/2019/11/06/things-pat

Photography courtesy of Hallett Cove Information



The Night Watch

by Hattie Naylor, from the book by Sarah Waters

Original Theatre and York Theatre Royal at Richmond Theatre until 9th November, then on tour until 23rd November

If we are to believe the wartime propaganda, carrots can help us see in the dark. Although there are no carrots in *The Night Watch*, darkness both literal and figurative sheds light on the small group of characters thrown together by love and other circumstances.



Alastair Whatley's direction is an effective combination of atmosphere and detail. So well realised by designer Max Pappenheim is the terraced property that dominates the stage, that it was not until the lighting changed that I realised it was transparent, serving first as its own interior and later as the bombed-out shell of itself. It is enough that we believe the house is there on the stage in front of us; or that the desk of the dating agency run by Viv and Helen becomes the roof of their building; or that a square of light is the cell in Wormwood Scrubs shared by Duncan and Robert.



Belief is not important only to us as the audience but is a central theme, but so much is sustained by belief in a time when one

cannot depend on reality.

Even time is out of joint in *The Night Watch*, for the conceit Hattie Naylor's adaptation borrows from Sarah Waters' novel is that its three acts progress backwards, from the London of 1947 to 1944 and then to 1941. This means we come weighted with the significance of details – the ring Kay gives to Viv, or the black market pink pyjamas she acquires for Helen – and only later become aware of how they have acquired that significance.

Read Matthew Grierson's review at www.markaspen.com/2019/11/06/the-night-watch

Photography by Mark Douet



Home is where the Heart is !!!

By Bruce Lyons

Well ! I suppose it had to be done , for nearly 20 years of the 25 we have been in the Square we have had the luxury of two shop fronts – plenty of space but in the climate of 2019 too much rent, rates and associated charges . Since late August we have been `Down Sizing and decluttering` and now we have finished , all the cabling, the computers reconfigured , desks relocated – Shona spent eons “facebooking” the desks/chairs and excess cupboards (all gone now!) – biggest problem was size as we kept the smaller shop as it has a `stock room` for the brochures , though it means that we are a bit more than COZY. Actually it looks more like a travel agency !! , and being smaller we will have to make bigger efforts to keep it tidy and all the brochures up to date, which they are – a mammoth task in itself. The lower shop, the one we kept is better in other ways as it is more visible from the highway and it s immediately where we keep the Chess and there is more “garden” which we like as we can see the fruits of our labour as we work – that`s right dear reader we look after them and we enjoy them too, we hope you do as well – though our planters look like our minds and fingers have been elsewhere while we have been managing the move , but the next two weeks will take care of all that – time for bulbs and Camelias “watch this space”



In the move we realised we needed more shelf space in what is a smaller space so we now have all that allocated – Adventure Playground – River Cruising – FarAway – Ocean Cruises – City Breaks – Coach Touring- don't be shy we happy to see you and you could book your holiday with us, please. We pride ourselves on good service and good advice and even relish tricky requests –

We look forward to seeing you In our Church street Square soon.

www.crusadertravel.com

TRAVELLER'S TALES 55

WALL FALL DOWN

DOUG GOODMAN RECALLS THOSE MOMENTOUS EVENTS IN BERLIN



Can you remember where you were and what you were doing on November 9th 30 years ago? I can!

Strange isn't it how we can recall major historic events and remember exactly what we were doing at the time. I was in a Russian lesson at college when the news on Kennedy's assassination broke, in Bristol in a hotel overlooking the Clifton suspension bridge when TV showed the dramatic pictures of the Berlin Wall coming down and in my office writing a press release on Halkidiki when the Nine Eleven attack occurred.



Berlin 1945



Symbol of Oppression



Soviet Military Power

DIVIDED CITY.

At the end of WW2 in 1945 Berlin was in ruins and divided into the American, British, French and Russian zones. The Western sector received massive support for its reconstruction and attracted people from East Berlin who wished to escape from Communism. In 1948 the border between East Germany and West Germany was closed thus isolating West Berlin and preventing supplies reaching the city by road and rail. On 24th June 1948 a massive airlift of food and fuel was started by the Western allies and fleets of aircraft maintained a non-stop shuttle service until 12th May 1949. Twelve years later as West Berlin continued its recovery and more and more citizens were fleeing from the German Democratic Republic, the

East German authorities prompted by Moscow began constructing a wall around West Berlin. It went up on 13th August 1961 in order, as the GDR stated, to keep its people safe from fascist influence and Western decadence. A concrete barrier 96 miles long soon encircled the city: barbed wire, deep ditches, watch towers with search lights and guns effectively kept the West Germans out of the East. But of course it was to prevent the East Germans from their mass exodus West. East German police guarded the border with Soviet military power in readiness for any attack. West Berliners could still cross into the East through various checkpoints and on the U Bahn, but for residents in the East it was no entry. In the 28 years of the Wall's existence around 100,000 people attempted to escape and about 5,000 succeeded by various means: some 200 are estimated to have been killed. There's an iconic picture of a guard leaping over the partly constructed wall before it was significantly strengthened.



The Wall Goes UP



Waving over the Berlin Wall



Checkpoint Charlie

THROUGH THE BORDER

I travelled to the Soviet Union twice in the 60's by train and experienced intense security checks and long delays when crossing from West Berlin to East Berlin and on returning. Armed guards scrutinised documents, searched luggage and almost took the train apart in their search for anybody or anything illegal. Once, on East Berlin station one of the students in my group swore at a guard and was promptly removed from the train. We departed for Kiev without him. He eventually returned to the UK with some difficulty as I held the group visa.

In the GDR a free press did not exist and no divergence from Communist thinking was tolerated. In East Germany repression was stronger than in any other country subjected to Communist rule. Citizens were forced to spy for the State and inform on family and friends: the secret police con-

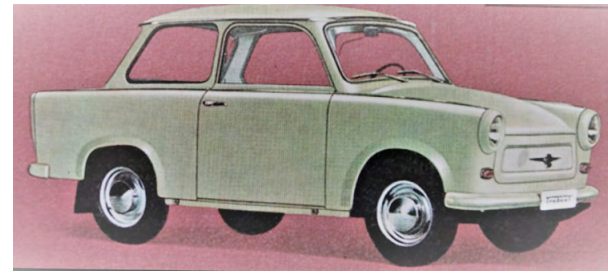
trolled every aspect of daily life. Long after the Wall was demolished some friends, who had been regular visitors to East Berlin were able to see their files in the former Stasi headquarters and were horrified to learn just what their German friends had been reporting about their conversations.



The Wall Falls
Partly destroyed Berlin Wall
with border policeman



Tourist Souvenir



A Trabant

FREEDOM WITHIN SIGHT.

During early 1979 Soviet control began to slip away: Hungary declared open its borders with East Germany and experienced a vast exodus. Revolts in other Eastern Bloc countries followed and contributed to the mounting unrest in the GDR. On 9th November 1989 the East German Government announced that its citizens could travel freely to West Berlin and West Germany. But no date for freedom was given. The East Berlin authorities were unsure how to react, while at the same time Western TV announced that crossing points to the West were open. Believing the news, the city's people began a massive demonstration at various places along the Wall. Watched by bewildered East German guards, who were still under orders to shoot escapers, the first breeches in that 'Wall of Shame' were made. That night and in the following days tens of thousands of people crossed into West Berlin to shop and stare at the modern city. A queue of the infamous Trabant cars stretched 20 miles as the traffic surged westward. The Wall was down and two years later the two Germanys were united. The rest is history.

CrusaderTravel



020 8744 0474

Escapology Experts

crusadertravel.com

info@crusadertravel.com



“A WINTERS JOURNEY”



Crusader Travel can create amazing journeys from weekends to your preferred duration.

**Jordanian Adventures
Red Sea Beach Holidays
Diving and Learn to Dive
Flydrives in the Holyland
Birdwatching on the Migratory Path
Nile Cruises
Fishing Adventures on Lake Nasser
Dead Sea Treatments for Psoriasis
Tel Aviv and Jerusalem City Breaks**

STOP PRESS

New direct flights to Sharm el Sheik just announced

A Winter Journey Continued...

Stuart McRae on Israel at New Year

Last time I explained how [Crusader Travel](#) organised a trip round Jordan for us last Christmas, in advance of a friend's birthday party in Eilat, and ended with us walking across the border into Israel. This is what we did next.



Bruce had arranged a delightful little B&B called Cactus. It's up the hill behind Eilat, half an hour's walk from the beach - though an App makes it easy to organise a taxi up/down the hill. Sandra, who runs it, has just a couple of rooms off the garden and, as her husband said, likes bright colours! There was a super restaurant close by and an amazing Brazilian steak house (Casa do Brazil) at the bottom of the hill - which, on New Year's Eve, did an amazing Japanese Kobe steak. The walk also took us past the old airport, which was about to close as flights were moving to the new airport outside of the city.

The weather in Eilat was warm and sunny, even over New Year, and while we didn't venture into the sea it was pleasant to lie on the beach. I am sure the tourist area was very quiet compared to the height of the season, but it was busy enough and everywhere was open. We were delighted to find a micro-brewery, called The Brewery, where we ran into a friendly couple from Estonia.

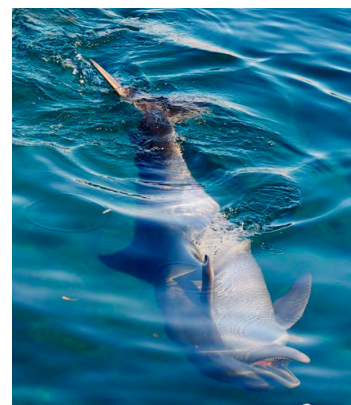
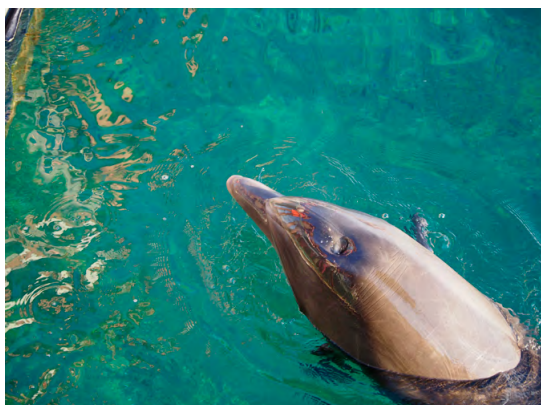
We walked along the coast a little, and the view back to Eilat showed the contrast between its high rise hotels and tourist attractions, and the traditional town of Aqaba across the border in Jordan.



As well as the party in Les Sardines, a nice fish restaurant, we had a second celebration in Eilat - New Year's Eve. We went to a local music bar, Mike's Place, which we already knew via its branch in Tel Aviv (and had the bonus of a pub cat, called Pirate). There was a great party atmosphere, and even fireworks over Eilat at midnight.



But the highlight in Eilat was a short taxi ride along the coast to Dolphin Reef. The dolphins are confined to a large bay, but otherwise free to do what they like - which seems to largely comprise of performing for the tourists! The resort also had a nice restaurant - and an interesting collection of exotic fowl!



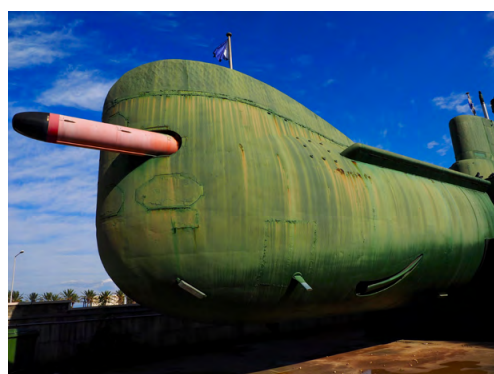
After five nights relaxing in Eilat, we headed north to Tel Aviv. Bruce had suggested taking the bus, which was a good eco-friendly alternative to a local flight and provided some super views of the desert. One tip: book the bus at the bus station in advance - the one we went for was full and we had to wait for the next.



The weather in Tel Aviv wasn't ideal in early January - but we were there to see friends and relatives, not sights, so it did not matter too much. The traditional Friday evening family get together, with three generations, was more than adequate compensation - and we did have one glorious, sunny day for our traditional walk along the sea front to Jaffa, while Tel Aviv's vibrant nightlife went on as usual!



From Tel Aviv we took a train up the coast to Haifa, where Bruce had arranged a nice little hotel close to the beach, to the cable car up to the heights for a magnificent view of the area and to the Clandestine Immigration and Naval Museum with a complete submarine, offering a view through its periscope of a local street lamp! Close by was a local, community run bar (where we met an American couple) and, in Haifa centre, LiBira, another Microbrewery.



From Haifa it was a short train ride to Akko and the Crusader Castle of Acre which provided a nice end to the trip. A coastal fortress, it features a tunnel from the citadel to the port. We had visited the isolated castle in Shawbak and the city centre preserved site at Karak, and now we had a castle with a bustling, vibrant community in the middle of it. Contrasting experiences, indeed!



It seemed fitting that Crusader Castles provided a recurring theme in our travels - organised by Crusader Travel! It was a super winter journey and has encouraged us to organise more trips over Christmas and New Year in the future.

Light Up At Night!!



Stay Safe
When cycling at night
always use a light

A Twickenham Tribune Campaign
www.TwickenhamTribune.com



BRENTFORD FC

BEES SLIP UP AT HOME

BRENTFORD 0 - HUDDERSFIELD 1 ATTENDANCE 11,727

Oh dear! With three great performances in a row producing maximum points and plenty of goals, this was the game that the Bees needed to win to take them into the play-off mix. Instead of winning and moving to 7th place they lost and dropped down to 13th. There are very fine lines in the Championship with most teams able to beat any other team on their day. Still – that’s what makes it exciting isn’t it?



Brentford were beaten 1-0 by Huddersfield Town after a tight encounter between two evenly matched sides at Griffin Park last Saturday. The only goal came in the second half, a low strike from Karlan Grant after an hour was all that could separate the two teams.

The half-time whistle blew with neither side able to break the deadlock. After 57 minutes, Brentford created their best chance of the afternoon. A deep cross from Henrik Dalsgaard found Julian Jeanvier, who headed it low towards goal. Grabara was down quickly to palm it around the post.

Then, 61 minutes in, Huddersfield scored. Karlan Grant dribbled inside from the left, escaped Dalsgaard - caught between two Town players to mark - and drove the ball low into the bottom right corner. And that was it with the Bees bringing on subs to ring the changes but despite several chances, Huddersfield held firm and Brentford got nothing at all out of the match.

Brentford: Raya; Dalsgaard, Jansson, Jeanvier, Henry; Mokotjo (Valencia 69), Norgaard, Dasilva (Jensen 69); Mbeumo (Zamburek 83), Benrahma, Watkins
BEES AWAY AT WIGAN TODAY

Last game in the Championship today (November 9th) before another International break. Kick - off is at 3.00.

INTERNATIONAL BREAK

Brentford have over 20 players from their first team and the B squad called up

for International duty in the next 10 days or so. From full senior caps through all the lower age groups. This just shows what an excellent job the club is doing in attracting quality footballers to Griffin Park.

Come on you Bees!

HAMPTON & RICHMOND BOROUGH

Tyrone Lewthwaite's late winner continued the Beavers winning run last Saturday at home to Maidstone United. That made it four league wins in a row for the Beavers!

Then came Tuesday and although it was firework night, Hampton didn't really light the blue touch paper and lost at home 2-1 to Dartford in front of an attendance of 451.

HAMPTON 2 – MAIDSTONE UNITED 1 Attendance 619

Maidstone United had enjoyed some early pressure, but it was the home side who took the lead in the ninth minute. Kyron Farrell blasted the Beavers in front with a thunderous strike from 25 yards. His left footed shot was hit with great power and accuracy leaving Jake Cole no chance.

Despite the away sides pressure, the Beavers were disappointed not to take a 2-0 lead into half-time. .

Maidstone started the second half quickly, with ex-Beaver Nana Kyei missing an early opportunity. The left winger taking too long over his chance and allowing the imposing Lincoln time to set himself and make a good save. Kyei quickly made amends however as he equalised in the 49th minute. The introduction of Ryan Hill and Lewthwaite for Hampton made the difference. It was Hill's fine cross after excellent work from the always impressive Jake Gray, for Lewthwaite to smash home from close range. Hill looked a danger from the moment he entered the fray, and combined with the predatory instincts of Lewthwaite it was just enough to edge a close game in the Beavers favour.

My thanks to Thomas Clark who originally wrote the Maidstone United report as it appeared on the Hampton and Richmond FC website.

Today (Saturday 9th November) Hampton are away to Weymouth with a 3.00 kick-off. Next Tuesday (12th) Harrow Borough are the visitors as cup football returns to the Beveree. Why not pop down to Station Road, Hampton and give our other senior local club some support.



England to return to Japan in July 2020

Japan Rugby has today confirmed the England men's senior squad tour to Japan next July.

England will face the Brave Blossoms in a two Test series in Oita (4 July) and Kobe (11 July).

The first Test will see Eddie Jones' side returning to the Showa Denko Dome venue of the Rugby World Cup quarter-final against Australia, while the second Test takes place at the Noevir Stadium where England faced USA in their second pool match in group C of the tournament.

Eddie Jones, England head coach, said: "Japan were fantastic Rugby World Cup hosts and we feel humbled to have been a part of it. The England squad had a fantastic experience of the country and we are excited to return in July next year.

"The Japan national team have shown again how good a side they are with their performances during the World Cup and I know they will provide a great test for us in July."

England last played Japan in November 2018 at Twickenham Stadium during the Quilter Internationals, winning 35-15. This was only the second time in history the two sides had played each other. The only previous meeting between the two nations was at the inaugural Rugby World Cup in 1987 when England secured a comfortable 60-7 victory in Sydney. England has never played a Test against Japan in Japan.

July Test Series 2020 – Japan v England

- 4 July: Showa Denko Dome, Oita
- 11 July: Noevir Stadium, Kobe



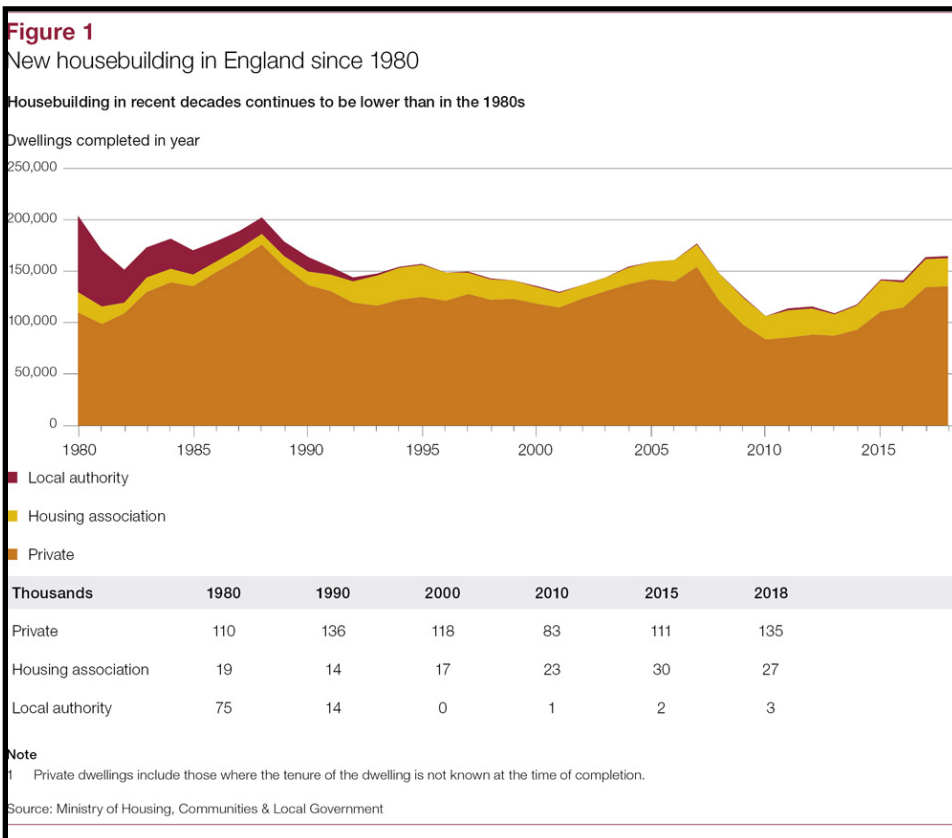
RFU

Investigation into Starter Homes

Report by the Comptroller and Auditor General

The full report and PAC Chair's statement can be accessed via the links at the top of this email

Today the National Audit Office (NAO) reports that despite the government announcing in 2015 that it intended to create 200,000 Starter Homes, no Starter Homes have been built to date as the necessary legislation is not in place. Between 2015-16 and 2017-18, the Ministry of Housing, Communities & Local Government (MHCLG) spent almost £174 million on acquiring and preparing sites originally intended for building Starter Homes. These sites are now being used for housing more generally, some of which is affordable housing.



Starter Homes were intended to be houses built exclusively for first-time buyers under the age of 40 and sold at a 20% discount. The November 2015 Spending Review provided £2.3 billion to support the creation of 60,000 Starter Homes.

The Housing and Planning Act (2016) set out the legislative framework for Starter Homes. However, without additional secondary legislation, even houses that conform to the intended Starter Home

specifications cannot be marketed as Starter Homes. MHCLG expected to introduce the secondary legislation and planning guidance required for Starter Homes in 2019 but it has not yet presented the regulations to Parliament. It no longer has a budget dedicated to the delivery of Starter Homes.

Read the NAO report for more information on the status of Starter Homes policy and legislation and the impact of MHCLG's investment.

View full report [HERE](#)



National Audit Office

Richmond Film Society's 57th Season of World Cinema continues at The Exchange, Twickenham

19th November, 8.00pm

'Everybody Knows' (Spain)

A psychological thriller from Iranian auteur, Asghar Farhadi ('A Separation', 'The Past', 'The Salesman').

Laura, a Spanish woman living in Buenos Aires, returns to her hometown outside Madrid with her two children to attend her sister's wedding. However, the trip is upset by unexpected events that bring secrets into the open. Starring Penélope Cruz, Javier Bardem and Ricardo Darín.

www.richmondfilmsoc.org.uk

Non-member tickets are £5 (full-time students £3) and can be purchased in advance from The Exchange's Box Office (subject to a cap of 60) - in person, by telephone on 020 8240 2399 or online at www.exchangetwickenham.co.uk/events/.

A further 50 or so tickets

will be available to purchase on the door on the night of screenings (cash only) on a 'first-come-first-served' basis.

Films are shown at 8.00pm sharp on alternate Tuesdays (no trailers and no ads) and are screened at The Exchange, 75 London Road, Twickenham, TW1 1BE. On screening nights, the Bar is open from 7.00pm and remains open after the film. Drinks can be taken into the auditorium and coffee, tea and snacks are also available. Film notes are provided for each screening and audience feedback is obtained via response slips.



Half Page

Quarter Page
Landscape

Quarter Page Portrait

Eighth Page

Eighth Page
Landscape

Example advert sizes shown above

Thousands read The Twickenham & Richmond Tribune

If you are reading this you could be advertising your business with
The Twickenham & Richmond Tribune. Community rates are
available

Contact: advertise@TwickenhamTribune.com

View ad details at www.TwickenhamTribune.com/advertise

Contact

contact@TwickenhamTribune.com

letters@TwickenhamTribune.com

advertise@TwickenhamTribune.com



Published by:

Twickenham Alive Limited (in association with World InfoZone Limited)

Registered in England & Wales

Reg No 10549345

The Twickenham Tribune is registered with the ICO under the Data Protection Act, Reg No ZA224725

©Twickenham Alive Limited. All rights reserved. No part of this publication may be used or reproduced without the permission of Twickenham Alive Limited. While we take reasonable efforts, this online newspaper cannot be held responsible for the accuracy or reliability of information. The views and opinions in these pages do not necessarily represent those of Twickenham Alive Limited or The Twickenham & Richmond Tribune. [Terms & Conditions](#)